

Jonathan Thomson

Neon Ceramic Sculpture

There is no originality except on the basis of tradition. These works combine Chinese ceramic forms with traditional Chinese motifs fabricated in neon in order to make wholly original contemporary works that speak to both modern and traditional Chinese culture.

This collection includes both sculptural objects and painting studies of sculptures.

Jonathan Thomson

Copyright Notice

All of the artworks, drawings, photographs and concepts contained in this presentation are Copyright © Jonathan Thomson and may not be copied, re-used or distributed to any party without the express permission of the copyright owner.
January 2017

Jonathan Thomson

Neon Ceramic Sculpture

Blue Rounded Vase with Auspicious Clouds
2016
Ceramic Vase, Gloss Enamel Paint, White Neon
510mm high



Jonathan Thomson

Neon Ceramic Sculpture

Blue Rounded Vase with Auspicious Clouds
2016
Ceramic Vase, Gloss Enamel Paint, White Neon
510mm high



Jonathan Thomson

Neon Ceramic Sculpture

Blue Rounded Vase with Auspicious Clouds
2016
Ceramic Vase, Gloss Enamel Paint, White Neon
510mm high



Jonathan Thomson

Neon Ceramic Sculpture

Study for Neon Ceramic Sculpture - Blue Rounded Vase with Auspicious Clouds
2016
Acrylic and Permanent Pen on Kraft Paper
1197 x 893 mm



Jonathan Thomson

Neon Ceramic Sculpture

Study for Neon Ceramic Sculpture - White Cup with Chrysanthemum
2016
Acrylic and Permanent Pen on Kraft Paper
1197 x 893 mm



Jonathan Thomson

Neon Ceramic Sculpture

Study for Neon Ceramic Sculpture - Red Stem Cup with Auspicious Clouds
2016
Acrylic and Permanent Pen on Kraft Paper
1197 x 893 mm



Jonathan Thomson

Neon Ceramic Sculpture

Study for Neon Ceramic Sculpture - Blue Tea Caddy with Waves
2016
Acrylic and Permanent Pen on Kraft Paper
1197 x 893 mm



Jonathan Thomson

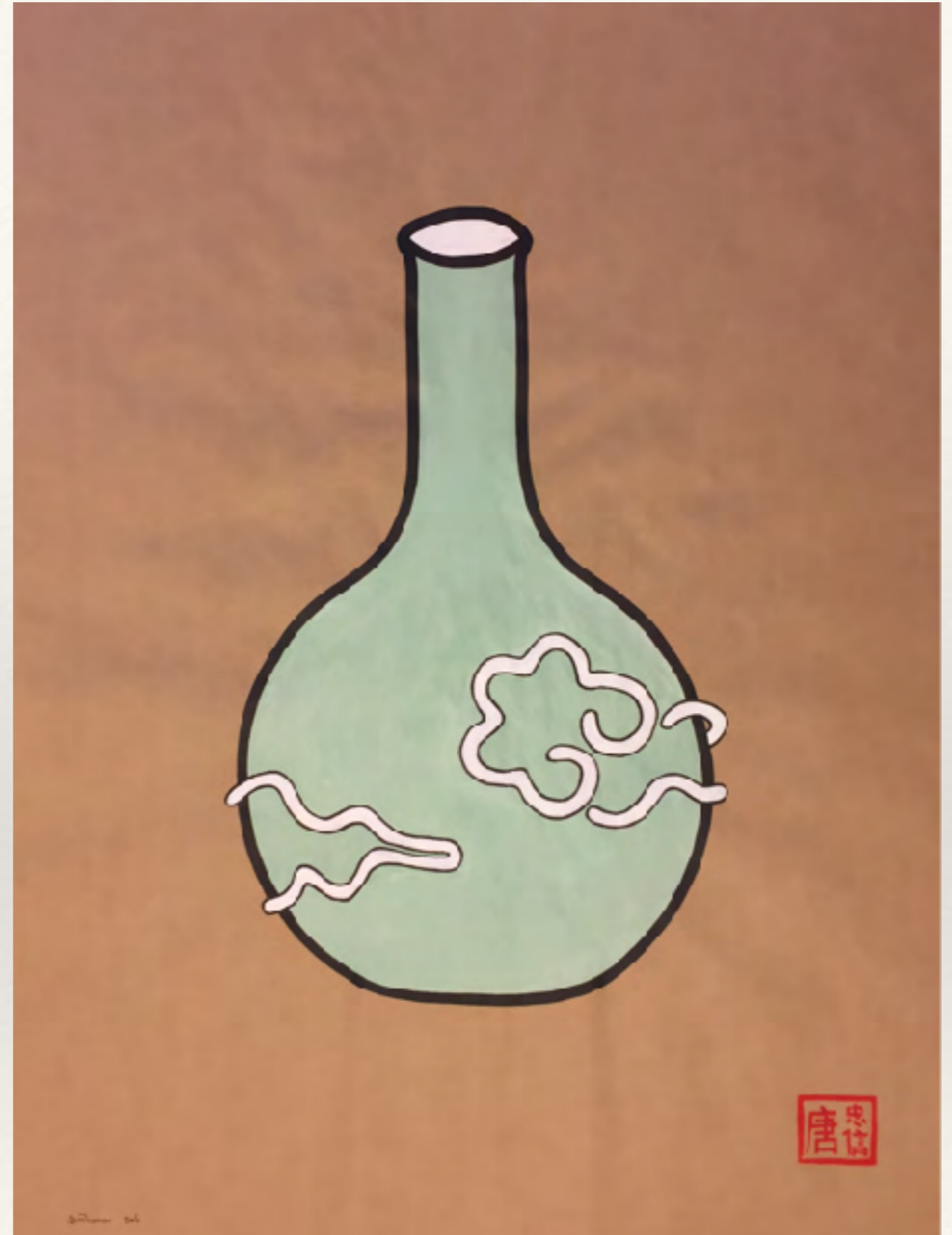
Neon Ceramic Sculpture

Study for Neon Ceramic Sculpture - Celadon Rounded Flask with Auspicious
Clouds

2016

Acrylic and Permanent Pen on Kraft Paper

1197 x 893 mm



Jonathan Thomson

Neon Ceramic Sculpture

Study for Neon Ceramic Sculpture - White Cup with Blue Pine
2017
Acrylic and Permanent Pen on Kraft Paper
1197 x 893 mm



Jonathan Thomson

Neon Ceramic Sculpture

Study for Neon Ceramic Sculpture - Red Tall Jar with Ta Kou Clouds
2016
Acrylic and Permanent Pen on Kraft Paper
1197 x 893 mm



Jonathan Thomson

Neon Ceramic Sculpture

Study for Neon Ceramic Sculpture - Blue Ginger Jar with Mountains
2016
Acrylic and Permanent Pen on Kraft Paper
1197 x 893 mm



Jonathan Thomson

Neon Ceramic Sculpture

Study for Neon Ceramic Sculpture - Blue Squared Vase with Auspicious Clouds
2016
Acrylic and Permanent Pen on Kraft Paper
1197 x 893 mm



Jonathan Thomson

Neon Ceramic Sculpture

Study for Neon Ceramic Sculpture - Yellow Tall Jar with Ta Kou Clouds
2016
Acrylic and Permanent Pen on Kraft Paper
1197 x 893 mm



Jonathan Thomson

Neon Ceramic Sculpture

Study for Neon Ceramic Sculpture - White Rounded Jar with Goldfish
2016
Acrylic and Permanent Pen on Kraft Paper
1197 x 893 mm



Jonathan Thomson

Neon Ceramic Sculpture

Study for Neon Ceramic Sculpture - Bronze Ritual Vessel with Scroll Design
2016
Acrylic and Permanent Pen on Kraft Paper
1197 x 893 mm



Jonathan Thomson

Neon Ceramic Sculpture

Study for Neon Ceramic Sculpture - Blue Cloud Handle Vase with Horse
2016
Acrylic and Permanent Pen on Kraft Paper
1197 x 893 mm



Jonathan Thomson

Neon Ceramic Sculpture

Study for Neon Ceramic Sculpture - White Cup with Green Pine
2017
Acrylic and Permanent Pen on Kraft Paper
1197 x 893 mm





Jonathan Thomson

Neon Ceramic Sculpture

Studies for Neon Ceramic Sculpture
Installation Rendering

Jonathan Thomson

About the artist

Jonathan Thomson is an Artist, Art Historian, Critic and Curator. He was born in Australia and has lived and worked in Hong Kong since 1995.

He has held solo shows of his work in Hong Kong in 2010, 2011 and 2015 and in Bangkok in 2011 and 2012. In 2010 his 15 metre high light sculpture “Mountain Water” was selected by an international judging panel for the new Legislative Council building in Hong Kong but was not commissioned. In 2011 his 22 metre long work “A Walk in the Clouds” was a prize winner at the Kobe Biennale.

He has held a number of senior positions in public arts administration in Australia and Hong Kong. In 2013 he was appointed an adjunct Professor of Art History at the Savannah College of Art (Hong Kong).

He established Thomson Fine Art in 2000 as an international arts policy and art gallery management consultancy that helps creative enterprises become more business-like and business enterprises to become more creative. His clients include Louis Vuitton, MGM China and the Osage Group.

He is an independent curator and has curated dozens of high profile and highly regarded exhibitions in Hong Kong, Shanghai, Beijing, Taipei, Macau, Manila, Bangkok, Jakarta and Singapore for a variety of clients.

He is an art critic and essayist and writes regularly for “Asian Art News”, “World Sculpture News” and “The Peak”. He is author of “Hong Kong: Culture and Creativity” published by the Hong Kong Arts Development Council and many hundreds of published essays and reviews.

Jonathan Thomson

Contact Details

Jonathan Thomson

唐忠信

T: 852 94511097

P: GPO Box 11314 Hong Kong

E: thomson@thomsonfineart.com

W: www.thomsonfineart.com
